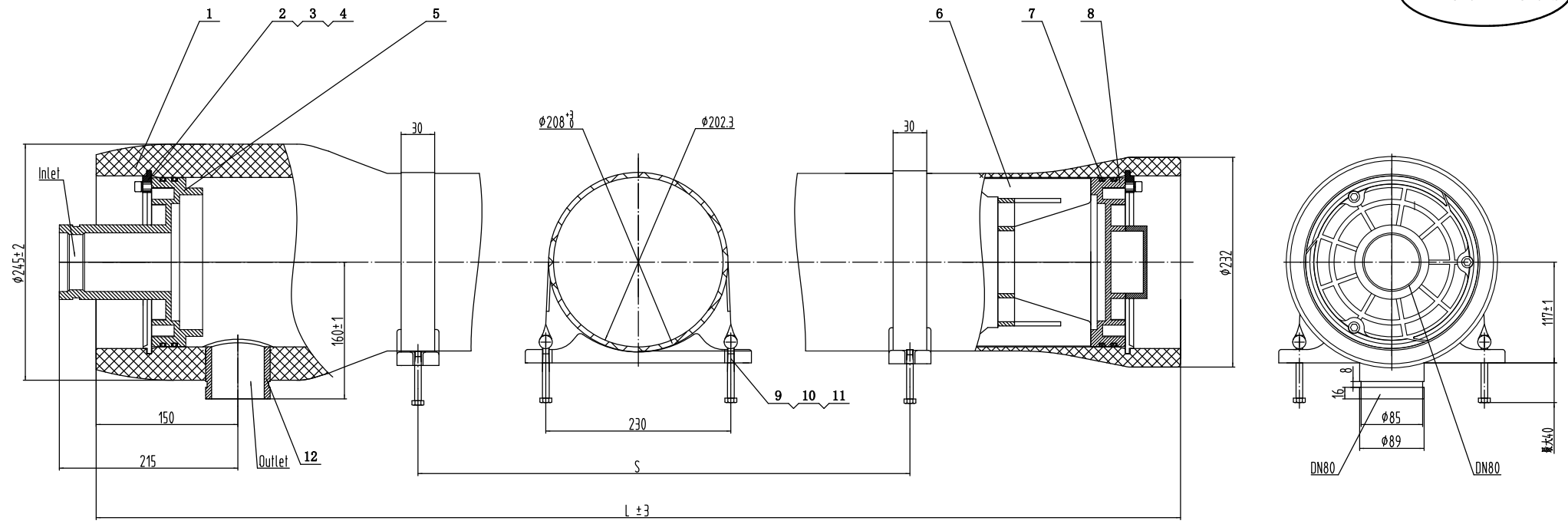


ET80-150S



12	Feed/Conc. Part	ET80-150S-12	1	PLASPIC/FRP	
11	Saddle	ET80-150S-11	2	Rubber	
10	Strap Screw	ET80-150S-10	4	304SST	
9	Strap	ET80-150S-9	2	304SST-Rubber	
8	Handle End Cap	ET80-150S-8	1	ABS	
7	O-Ring	ET80-150S-7	3	EPDM	190x5.3
6	Thrust Ring	ET80-150S-6	1	ABS	
5	Inlet End Cap	ET80-150S-5	1	ABS	
4	Locking Kit Segment	ET80-150S-4	6	304SST	
3	Spring Pad	ET80-150S-3	6	304SST	φ8
2	Locking Segment Screw	ET80-150S-2	6	304SST	M8x16
1	Pressure Shell	See SelectionTable	1	Epoxy FRP	White
Ref.	Description	Part Number	Qty.	Material	Remark

Ref.	Part Number	L (MM)	S (MM)	Approx assembly weight (KG)
20"	ET80-150S-20	792	260	24
40"	ET80-150S-40	1300	800	27
60"	ET80-150S-60	1808	1300	30.5

- Note:
1. Design pressure: 1.0MPa(10KG)
  2. Design temperature: 150° F(66° C)
  3. Minimum temperature: 14° F(-10° C)
  4. Working medium: Water, PH 3-11
  5. Please operate in accordance with User Guide
  6. Flexible piping should be used on permeate connection to manifold

Harbin FirstLine Environment Technology Co., Ltd.

<b>First Line</b>	Design Date	Model	ET80-150S Cartridge Housing
	Review Date	DRG	ET80-150S-00
	Approval Date	Unit	mm
		REV.	2017